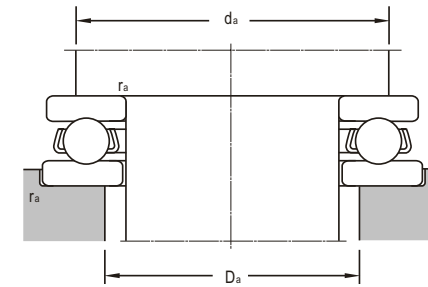
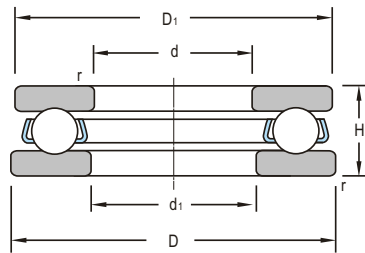


Thrust Ball Bearings

cylindrical roller



d 25~75mm

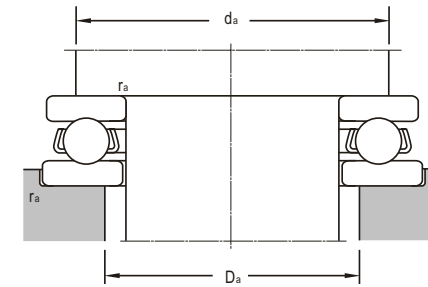
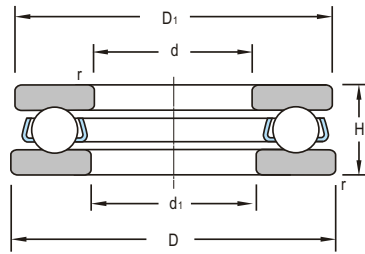
Boundary Dimensions						Basic Load Ratings		Limiting Speeds	
d	d ₁	D	D ₁	H	r _{min}	Dynamic C	Static C ₀	Grease	Oil
mm						kN		r/min	
25	25.2	40.5	40.5	7	0.3	13.8	66	4000	5500
34.925	37	79	79	15.875	1	76.8	316.8	2500	3400
35	35.2 35	52 52	52 52	8 18.5	0.6 1	18.1	95.74	3400	4500
40	40.2 40.2 40.2 42	60 68 90 78	60 68 90 78	13 19 16 22	0.6 1 1.1 1	38 83 92.9 91.1	118 255 400 285	1700 1400 2400 2000	2400 1900 3100 4000
45	45.2 45	110 80	110 80	19 60	1.1 1	150	619.5	1900	2600
50	50.2 50	78 110	78 110	22 82	1 1.1	91.5	300	1200	1700
55	55.2 57 57	78 90 105	78 90 105	16 25 30	0.6 1 1.1	69.5 116 145	285 365 564	1400 950 1200	1900 1400 1600
60	60 60 60.2 62 62 62 62	100 120 138 85 95 110 130	100 120 138 85 95 110 130	12 82 22 17 26 30 32	1 1.1 2 1 1 1.1 1.5	91.4	372		
65	65 65.2 67 70	90 90 100 165	90 90 100 165	26.4 18 27 25	1.5 1 1 2	83 140	320 490	1200 1200	1700 1700
70	72	95	95	18	1	81.9	254	1200	1700
72	72	108	102	13	1.5				
75	77 77	100 110	100 110	19 27	1 1	75.5 125	266 440	1100 850	1600 1200

Bearing Designations		Minimum Load Constant A	Mounting Dimensions			Mass
Present	Original		d _a	D _a	r _{max}	
			mm			kg
81705	589705	0.00031	39	26	0.3	0.038
817/34.925	549707	0.0083	75	38	1	0.441
87107	7009107 89707	0.00057	51 51	36 36	0.6 1	0.0625 0.173
81108	9108	0.0011	56	44	0.6	0.146
81208	9208	0.0051	63	45	1	0.32
81708	559708	0.0073	85	44	1.1	0.497
89308M		0.009	76	44	1	0.526
81709	559709 459709	0.0077	106 68	47 46	1.1 1	0.94 1.21
81210	9210 495710	0.0073	75 91	53 54	1 1.1	0.43 3.59
81111	9111	0.0066	77	56	0.6	0.27
81211	9211	0.011	85	59	1	0.708
89311	954311	0.019	102	59	1.1	1.38
KOW-87212X3			124	63	1	0.404
81712	459712 559712		102 134	64 65	1.1 2	4.41 1.18
81112	9112	0.0073	82	62	1	0.338
81212	9212		91	64	1	0.792
89312M		0.023	107	65	1	1.37
87412	7559412	0.06	124	65	1.5	2.45
81113	89713 9113	0.0083	87 87	67 67	1.5 1	0.63 0.381
81213	9213	0.019	96	69	1	0.874
81714	559714		157	72	2	2.6
81114	9214	0.0096	92	72	1	0.403
81814	559814		99	74	1.5	
81115	9115	0.0068	97	78	1	0.455
81215	9215	0.015	106	79	1	0.979



Thrust Ball Bearings

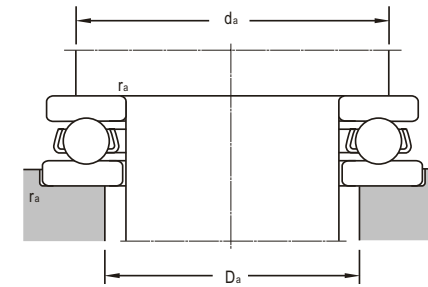
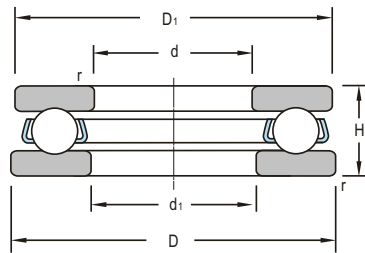
cylindrical roller



d 75~150mm

Boundary Dimensions						Basic Load Ratings		Limiting Speeds	
d	d ₁	D	D ₁	H	r _{min}	Dynamic C	Static C ₀	Grease	Oil
mm						kN		r/min	
75	77	135	135	36	1.5	218	920	1000	2400
80	80.2	150	150	26	1.5	238	1056	1400	1900
	80.2	150	150	26	2.5				
	82	105	105	19	1	76.5	134	1000	1500
	82	115	115	28	1	160	270	850	1200
85	85.2	110	110	19	1	76.5	310	1000	1500
	88	125	125	31	1	153	550	800	1100
	88	150	150	39	1.5	286	1200	900	1200
	88	150	150	39	1.5	257	1100	1100	2200
90	90.2	120	120	22	1	104	415	900	1300
	90.2	160	160	26	1.5	250	1210	1300	1800
100			135	11	1	77.6	530	1800	2500
	100.2	190	190	39	1.5	451	2090	1000	1400
	100.2	135	135	25	1	152	544	850	1200
	103	150	150	38	1.1	214	830	800	1100
	103	170	170	42	1.5	327	1520	760	1100
110	110.2	200	200	39	2.1	459	2194	990	1300
	110.2	200	200	26	2	460	2180		
	111	230	230	60	3	634	2642	720	960
	112	145	145	25	1	153	280	800	1100
	113	160	160	38	1.1	244	827	630	850
120	100	215	215	30	1.1	451	2471	850	1200
	120.2	155	155	25	1	146	680	950	1400
	123	170	170	39	1.1	258	918	600	800
	123	210	210	54	2.1	555	1876		
130			170	14	1	113	825	1400	1800
	130.2	225	187	30	2.1	446	2180		
	133	190	187	45	1.5	344	1250	670	900
150			188	21.5	1	246	1174	1000	1300
	150.3	300	300	35	2.1	698	4330	840	1100
	152	190	188	31	1	253	1230	630	850
	153	230	227	50	3	553	2370	800	1100

Bearing Designations		Minimum Load Constant A	Mounting Dimensions			Mass kg
Present	Original		d _a	D _a	r _{max}	
			mm			
89315M		0.042	132	83	1.5	2.51
81716	9716	0.032	143	82	1.5	2.06
81716L	9716L		143			2.06
81116	9116	0.0073	102	83	1	0.4
81216	9216	0.03	112	84	1	0.9
82716	59716	0.044	130	92	0.6	3.28
81117	9117	0.0077	108	87	1	0.52
81217	9217	0.024	119	90	1	1.44
89317	9549317	0.054	144	91	1.5	3.35
89317M		0.054	147	93	1.5	3.29
81118	9118	0.014	117	93	1	0.797
81718	9718	0.039	154	96	1.5	2.25
KIW-87120	7789120	0.028	131	104		0.517
81720	9720	0.06	182	105		5.11
81120	9220	0.028	131	104	1	1.19
81220	9220	0.054	142	107	1	2.58
89320	9549320	0.074	163	108	1.5	4.49
81722	9722	0.075	192	115	2.1	5.43
40W-87322X3			192	115	2	3.7
89422 X2	549822	0.3	220	116	3	13.7
81122	9122	0.32	141	114	1	1.1
81222	9222	0.067	152	117	1	2.78
81724	559724	0.1	206	125	1.1	5.03
81124	9124	0.037	151	124	1	1.36
81224	9224	0.074	162	127	1	3.08
89324	9549324		202	127	2.1	9.37
KIW-89126 X2	799726	0.049	163	135	1	0.949
KOW-8726X2		5.52	181	135	2.1	5.52
81226	9226	0.13	181	137	1.5	4.59
KIW-81130	209130	0.065	182	156	1	1.54
87430 X2	569730	0.45	288	156	2.1	11.3
81130	9130	0.065	185	155	1	2.3
81730	9830	0.35	220	160	3	8.22



d 150~1320mm

Boundary Dimensions						Basic Load Ratings		Limiting Speeds	
<i>d</i>	<i>d</i> ₁	<i>D</i>	<i>D</i> ₁	<i>H</i>	<i>r</i> _{min}	Dynamic <i>C</i>	Static <i>C</i> ₀	Grease	Oil
mm						kN		r/min	
150	153	215	212	50	1.5	459	1615	480	630
240	285	445		95	4	1210	5943	360	480
	300	540		145	6	2770	12917	230	300
280	285	440	435	95	5	2230	10200	260	310
420	424	495	500	65	2	900	2600	240	340
	464	560	555	80	2.1	1030	6150	200	300
	461.5	580	580	102	4	1580	8580		
500	505	670	665	135	5	3400	17600	140	190
530	532	710	708	82	5	2280	17840	220	290
560	565	750	745	150	5	3900	20800	120	170
600	602	860	860	125	6	3870	12980	130	180
610	610	710	710	65	4	1080	7300		
630	634	750	745	95	3	2180	13700	220	450
670	672	900	900	103	6	3530	26503	160	200
710	714	850	848	63	4	1440	13657	240	300
800	800	950	950	90	4	1360	9440	160	200
850	855	1000	995	67	4	1864	17480	200	260
900	902	1180	1180	125	7.5	5300	50459	100	130
1060	1065	1400	1400	155	9.5	8950	79388	87	110
1180	1180	1325		88.5	3	4430	21700	100	150
	1185	1400	1395	100	6	4430	48664	110	140
1320	1325	1700	1700	175	9.5	10300	105400	67	90

Bearing Designations		Minimum Load Constant <i>A</i>	Mounting Dimensions			Mass
Present	Original		<i>d</i> _a	<i>D</i> _a	<i>r</i> _{max}	
			mm			kg
81230	9230	0.28	211	158	1.5	6.45
81757 DH	809757	4	428	296	4	60.4
	89460 DH	10	520	312	6	161
89356			421	299	4	60.8
81184		2.8	493	433	2	25.6
81192 LY-8008		5.7	553	479	2	42.6
			558	480	4	71.8
812/500	92/500	25	661	540	4	153
872/530	75492/530	23	689	551	5	96.6
812/560	92/560	35	741	611	4	198
817/600	5497/600	23	850	620	6	264
817/610M/P4YB5		23.1	698	622	3	51
811/630M		91.2	740	640	2.5	83.7
872/670	75492/670	30	895	685	6	198
871/710	75491/710	27	843	728	4	79
891/800	90091/800	32	944	810	4	105
871/850	75491/850	32	989	862	4	97.1
972/900	75492/900	46	1173	908	7.5	386
872/1060	75492/1060	50	1392	1072	9.5	689
817/1180 DH	97/1180	25	1317	1188	3	173
	871/1180	35	1389	1190	6	311
872/1320	75492/1320	56	1690	1330	9.5	105