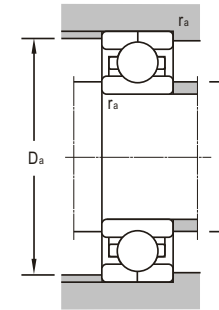
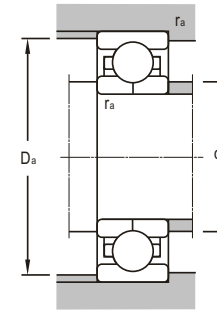
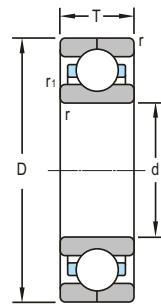
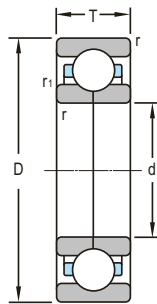


d 10~100mm

Boundary Dimensions						Basic Load Ratings		Limiting Speeds	
<i>d</i>	<i>D</i>	<i>B</i>	<i>T</i>	<i>r_{min}</i>	<i>r₁</i>	Dynamic <i>C</i>	Static <i>C₀</i>	Grease	Oil
mm						kN		r/min	
10	28	8	8	0.3	0.3	5.82	2.53	24000	30000
16	30	106.2	106.2	1.4	1.4	11.3	6.5	7.9	5.4
17	35	10	10	0.3	0.3	8.23	4.53	15000	20000
20	47	12	12	1.1	0.5	15.5	8.92	15000	19000
25	62	17	20	1.1	0.6	27	15.6	11000	14500
	67	20.6	34	1	0.8	23.5	19.3	11000	14500
26	62	17	20	1.1	0.5	27	15.6	11000	14500
32	72	24.5	30	1.1	0.5	32.8	20.5	18000	12000
30	72	19	19	1.1		38.5	38	6700	9000
35	59.482	14.5	14.5	1.1	0.5	21.4	14.9	8000	10000
	80	29	33.5	1.5	0.5	40.2	24.7	9000	11000
53	84	16.15	20	1.1	0.6	17.4	14.7	7300	9200
63	102	23	27	2	1	31.5	21.6	6000	8000
65	102	16.5	21.5	1.1	1.1	26.9	21.7	6000	8000
	140	33	33	2.1	2.1	118	132	3800	5300
70	125	24	24	1.5		51.8	43.1	3200	4300
75	160	37	37	2.1	2.1	163	204	3400	4800
80	140	21	26.5	2	1	51	48	3500	4400
81	107	17	17	0.5	0.5	16.4	24.6		
90	140	24	24	1.5		59.1	56.6	6000	7600
	190	43	43	3		193	259	2400	3400
91	117	20	20	0.5	0.5	17	26.9		
100	180	34	34	2.1	2.1	152	215	2800	3800

Bearing Designations		Mounting Dimensions			Mass
Present	Original	<i>d_{1min}</i>	<i>D_{amax}</i>	<i>r_{amax}</i>	
		mm			kg
S7600	6700	12.4	25.6	0.3	0.0227
WR1630106.2	3-637				0.253
S71003	106103	19.4	32.6	0.3	0.0452
S70204X2	6704	27	40	1	0.103
SN7305X2/YA	26705	32	55	1	0.276
4605-2RS	186705	31	61	1	0.523
S76/26/YA	26905	33	55	1	0.281
SN76/32/YA	26706	39	65	1	0.454
QJS306	176306	37	65	1	0.418
LR7607	226707	42	53	1	0.105
SN72307X2/YA	26707	44	71	1.5	0.561
46/53/YA	996911K1	60	77	1	0.44
B76/63/YA	26913	73	92	2	0.707
QJ313	996713	72	95	1	0.569
	176313	77	128	2.1	2.7
QJS214	276214	79	114	1.5	1.31
QJ315N2	176315	87	148	2.1	4.04
S7216X2/YA	26216	90	130	2	1.33
LY-Q017		83.5	104.5	0.5	0.312
QJ1018	1176118	99	131	1.5	1.47
QJ318	176318	104	176	2.5	6.51
LY-Q018		93.5	114.5	0.5	0.346
QJ220N2		112	168	2.1	4.22



d 120~1060mm

Boundary Dimensions						Basic Load Ratings		Limiting Speeds	
<i>d</i>	<i>D</i>	<i>B</i>	<i>T</i>	<i>r_{min}</i>	<i>r₁</i>	Dynamic <i>C</i>	Static <i>C₀</i>	Grease	Oil
mm						kN		r/min	
120	165	34	34	1.1	0.8	85.4	131	1400	2000
	215	40	40	2.1	2.1	209	318	2400	3200
	260	55	55	3	3	263	365	1600	2200
140	210	33	33	2	2	206	273	3200	4000
	250	42	42	3	3	252	436	2000	2800
	300	62	62	4	4	361	646	1700	2400
150	225	35	35	2.1	2.1	169	298	3000	3700
160	220	45	45	2	1	125	208	1000	1500
	290	48	48	3	3	286	533	1700	2400
170	230	45	45	2	1	128	220	950	1450
	260	42	42	2.1	2.1	221	409	1800	2400
	310	52	52	4	4	382	742	2000	1500
180	280	46	46	2.1	2.1	246	481	1300	1800
	280	46	46	2.1	2.1	246	481	1300	1800
190	260	33	33	2	2	125	177	2600	3200
220	300	60	60	2.5	1.2	219	392	1900	2400
	340	56	56	3	3	306	653	1200	1700
240	440	72	72	4	4	649	1200	1000	1500
260	368	48	48	2.1	2.1	298	676	1000	1400
280	420	65	65	4	4	410	1010	1400	1800
	389.5	65	65	4	4	433	803	900	1100
320	440	50	100	4	4	237	492	1200	1500
	480	74	74	4	4	447	587	800	1100
	580	92	92	5	5	946	2100		
360	540	82	82	5	5	491	900	1000	1300
1000	1380	190							
1060	1500	195							

Bearing Designations		Mounting Dimensions			Mass
Present	Original	<i>d_{1min}</i>	<i>D_{amax}</i>	<i>r_{amax}</i>	
		mm			kg
3924D	3356924	127	158	1	2.51
QJ224N2		132	203	2.1	7.04
QJF324	116324	134	246	2.5	15.6
QJF1028	176128	150	200	2	4.33
QJ228N2		154	236	2.5	10.1
QJ328		158	382	3	
QJF1030	176130	162	213	2.1	5.16
3932D	3356932	170	210	2	5.41
QJ232		174	276	2.5	16
3934D	3356934	180	220	2	5.9
QJF1034		182	248	2.1	8.18
QJ234N2	176234K	188	292	3	18.107
QJ1036	176136	192	268	2.1	11.4
QJ1036N2	176136K	192	268	2.1	11.4
QJ1938	1176938	200	250	2	6.02
3944D	3356944	234	286	2.1	13.1
QJ1044N2	176144	234	326	2.5	20.2
QJF248M		258	222	3	51.6
QJF1952X2		272	356	2.1	16.9
QJF1056	176156	298	402	3	34.3
QJF1056X1		298	371	3	23.2
7664D		338	422	3	
QJF1064	176164	338	462	3	50
QJF 264 M		342	558	4	123
QJF1072	176172	382	518	4	71.5
QJ 6/1000M				393	
QJ 6/1060MA/C9				393	