

Rollers

LYC is able to manufacture tapered, cylindrical and spherical rollers, there are more than 800 sizes (OD from 5 to 80mm) in different types and different tolerances. LYC also can manufacture the rollers in special profile as per clients' drawings to meet their individualized demands. Its products are suitable for the bearings used in the industries of machine building, motors, railways, mining, steel mill and precision instruments, etc.

Symbols, definitions

- D_w nominal diameter
- l central section of roller length
- l_G roller diameter gauge interval
- l_{GL} roller length gauge interval
- L_w nominal length
- S_{Dw} circle run-out for reference faces
- R_a surface roughness
- V_{DwL} variation of roller lot diameter
- V_{Dwp} variation of roller diameter in a single plane
- V_{LwL} variation of lot length
- $V_{\varphi L}$ variation of lot taper angle
- ΔC_{ir} deviation from circular form
- $\Delta 2\varphi$ deviation for taper angle

1. Cylindrical Rollers

Table 1.1 Dimensional and Form Accuracy of Cylindrical Rollers

| Grade | L_w | | V_{LwL} max | l_{GL} μm | Guage μm | S_{Dw} max μm |
|-------|-------|-------|------------------|---------------------|------------------|----------------------------|
| | over | incl. | | | | |
| mm | | | | | | |
| 0 | — | 26 | 6 | 6 | -30,.....,-6, 0 | 3 |
| | 26 | — | | | | |
| I | — | 26 | 10 | 6 | -30,.....,-6, 0 | 5 |
| | 26 | — | | | | |
| II | — | 26 | 14 | 6 | -30,.....,-6, 0 | 6 |
| | 26 | 50 | | | | |
| III | — | 26 | 20 | 8 | -32,.....,-8, 0 | 10 |
| | 26 | 50 | | | | |

Table 1.2 Surface Roughness for Cylindrical Rollers

| Grade | Rolling Surface | R_a | | Chamfer |
|---------|-----------------|----------|------|---------|
| | | End Face | max | |
| μm | | | | |
| 0 | 0.1 | 0.125 | 1.25 | 1.25 |
| I | 0.125 | 0.16 | 1.25 | 1.25 |
| II | 0.16 | 0.25 | 2.5 | 2.5 |
| III | 0.25 | 0.32 | 2.5 | 2.5 |

Table 1.3 Dinsional and Form Accuracy of Cylindrical Rollers

| Grade | D_w | | V_{DwL}^a max | l_G μm | Guage | | | ΔC_{ir} max μm |
|-------|-------|-------|--------------------|------------------|------------------|---|---------------|-----------------------------------|
| | over | incl. | | | μm | | | |
| mm | | | | | | | | |
| 0 | — | 18 | 1 | 1 | -10,.....,-1 | 0 | +1,.....,+5 | 0.3 |
| | 18 | 30 | | | | | | |
| I | — | 18 | 2 | 1.5 | -10,.....,-1 | 0 | +1,.....,+5 | 0.4 |
| | 18 | 30 | | | | | | |
| II | — | 18 | 3 | 1.5 | -10,.....,-1 | 0 | +1,.....,+5 | 0.5 |
| | 18 | 30 | | | | | | |
| III | — | 18 | 4 | 1 | -10,.....,-1 | 0 | +1,.....,+5 | 1 |
| | 18 | 30 | | | | | | |
| | — | 18 | 5 | 3 | -19.5,.....,-1.5 | 0 | +1.5,.....,+6 | 1.5 |
| | 30 | — | | | | | | |

^a Suitable to the central section of roller length

2. Spherical Rollers

Table 2.1 Dimensional and Form Accuracy of Spherical Rollers

| Grade | D_w | | V_{Dwp} | ΔC_{ir} max | S_{Dw} | V_{DwL} |
|---------|-------|-------|-----------|------------------------|----------|-----------|
| | over | incl. | | | | |
| μm | | | | | | |
| II | - | 10 | 1.5 | 1.5 | 3.0 | 3.0 |
| | 10 | 18 | 1.5 | 1.5 | 4.0 | 3.0 |
| | 18 | 30 | 2.5 | 2.5 | 5.0 | 4.0 |
| | 30 | 50 | 3.0 | 3.0 | 6.0 | 5.0 |
| | 50 | 80 | 4.0 | 4.0 | 8.0 | 6.0 |
| III | 80 | 120 | 5.0 | 5.0 | 9.0 | 7.0 |
| | - | 10 | 2.0 | 2.0 | 5.0 | 4.0 |
| | 10 | 18 | 2.0 | 2.0 | 6.5 | 4.0 |
| | 18 | 30 | 3.0 | 3.0 | 8.5 | 5.0 |
| | 30 | 50 | 4.0 | 4.0 | 10.0 | 6.0 |
| | 50 | 80 | 5.0 | 5.0 | 12.0 | 7.0 |
| | 80 | 120 | 6.0 | 6.0 | 13.0 | 8.0 |



Balls and Rollers
rollers

Table 2.2 Surface Roughness for Spherical Rollers

| Grade | Rolling Surface | R_a | |
|---------------|-----------------|--------------------|--------------------|
| | | Reference face max | Non-reference Face |
| μm | | | |
| II | 0.125 | 0.40 | 2.50 |
| | 0.125 | 0.40 | 2.50 |
| | 0.160 | 0.40 | 2.50 |
| | 0.250 | 0.40 | 2.50 |
| III | 0.320 | 0.40 | 2.50 |
| | 0.400 | 0.63 | 5.00 |
| | 0.160 | 0.40 | 2.5 |
| | 0.160 | 0.40 | 2.5 |
| | 0.250 | 0.40 | 2.5 |
| | 0.320 | 0.40 | 2.5 |
| | 0.400 | 0.40 | 2.5 |
| | 0.630 | 0.63 | 5.0 |

3. Tapered Rollers

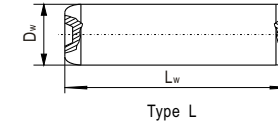
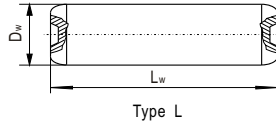
Table 3.1 Dimensional and Form Accuracy of Tapered Rollers

| Grade | D_w | | V_{DWP} | ΔC_{fr} | S_{Dw} | $\Delta 2\phi^{1)}$ | | V_{DwL} | $V_{zpl}^{1)}$ |
|-------|-------|-------|---------------|-----------------|---------------|---------------------|---------------|-----------|----------------|
| | over | incl. | | | | up | down | | |
| | mm | | μm | | μm | | μm | | |
| 0 | - | 10 | 0.3 | 1.0 | +0.6 | -0.6 | 1.0 | 0.6 | |
| | 10 | 18 | 0.3 | 1.0 | +0.7 | -0.7 | 1.0 | 0.7 | |
| | 18 | 30 | 0.4 | 2.0 | +0.7 | -0.7 | 1.0 | 0.7 | |
| I | - | 10 | 0.5 | 2.0 | +1.0 | -1.0 | 1.0 | 1.0 | |
| | 10 | 18 | 0.5 | 2.5 | +1.0 | -1.0 | 1.5 | 1.0 | |
| | 18 | 30 | 0.8 | 3.0 | +1.5 | -1.5 | 2.0 | 1.5 | |
| II | - | 10 | 1.2 | 3.0 | +2.0 | -2.0 | 2.0 | 2.0 | |
| | 10 | 18 | 1.2 | 4.0 | +2.0 | -2.0 | 2.5 | 2.0 | |
| | 18 | 30 | 1.5 | 5.0 | +2.5 | -2.5 | 3.0 | 2.5 | |
| | 30 | 50 | 2.0 | 6.0 | +3.0 | -3.0 | 3.0 | 3.0 | |
| III | - | 10 | 2.0 | 5.0 | +2.0 | -2.0 | 3.0 | 3.0 | |
| | 10 | 18 | 2.0 | 6.5 | +3.0 | -3.0 | 3.0 | 3.0 | |
| | 18 | 30 | 3.0 | 8.5 | +4.0 | -4.0 | 5.0 | 5.0 | |
| | 30 | 50 | 3.0 | 10.0 | +5.0 | -5.0 | 5.0 | 5.0 | |
| | 50 | 80 | 4.0 | 12.0 | +5.0 | -5.0 | 5.0 | 5.0 | |

¹⁾ The value ranges in the effective length of rollers and expressed by the radial dimension variation.

Table 3.2 Surface Roughness for Tapered Rollers

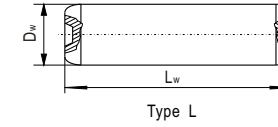
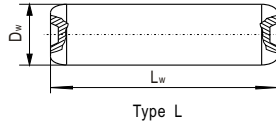
| Grade | Rolling Surface | R_a | |
|---------------|------------------------|--------------------|--------------------|
| | | Reference face max | Non-reference Face |
| μm | | | |
| 0 | 0.04 | 0.1 | 1.25 |
| I | 0.08 | 0.125 | 1.25 |
| II | 0.125 | 0.16 | 2.5 |
| III | $D_w \leq 30\text{mm}$ | 0.16 | 0.32 |
| | $D_w > 30\text{mm}$ | 0.25 | |



LYC Cylindrical Rollers

| No. | Designations | Dimensions | | Mass | Bearing No. for Reference |
|-----|--------------|------------|-------|---------|---------------------------|
| | | D_w | L_w | | |
| | | mm | | kg | |
| 1 | 5×6 | 5 | 6 | 0.00092 | Y30-2B |
| 2 | 5×8 | 5 | 8 | 0.00122 | NUTR205 |
| 3 | 5×9 | 5 | 9 | 0.00135 | LY-N010 |
| 4 | 5.5×5.5 | 5.5 | 5.5 | 0.00101 | N82/32M |
| 5 | 6×6 | 6 | 6 | 0.00132 | 81108/P4 |
| 6 | 6×8 | 6 | 8 | 0.00176 | |
| 7 | 6×10 | 6 | 10 | 0.00219 | NUTR3072X |
| 8 | 6×12 | 6 | 12 | 0.00265 | LY-NU15 |
| 9 | 6.35×31 | 6.35 | 31 | 0.00760 | |
| 10 | 6.35×41.28 | 6.35 | 41.28 | 0.01000 | |
| 11 | 6.5×6.5 | 6.5 | 6.5 | 0.00170 | N204 |
| 12 | 6.5×20.5 | 6.5 | 20.5 | 0.00531 | NA6915A.R200.250.S3 |
| 13 | 7×7 | 7 | 7 | 0.00208 | NN3010K/P5 |
| 14 | 7×10 | 7 | 10 | 0.00288 | |
| 15 | 7×16 | 7 | 16 | 0.00479 | |
| 16 | 7×29.8 | 7 | 29.8 | 0.00893 | LY-Z009 |
| 17 | 7.5×7.5 | 7.5 | 7.5 | 0.00256 | N206 |
| 18 | 7.5×9 | 7.5 | 9 | 0.00300 | NJ206ETM1 |
| 19 | 7.5×10 | 7.5 | 10 | 0.00380 | NUTR310 |
| 20 | 7.5×11 | 7.5 | 11 | 0.00379 | LY-N014 |
| 21 | 7.5×39.8 | 7.5 | 39.8 | 0.01370 | |
| 22 | 8×10 | 8 | 10 | 0.00391 | NU1012M |
| 23 | 8×12 | 8 | 12 | 0.00469 | LY-N016 |
| 24 | 8×18 | 8 | 18 | 0.00704 | |
| 25 | 8.5×25 | 8.5 | 25 | 0.01100 | NUTR60130X |
| 26 | 9×9 | 9 | 9 | 0.00440 | NCL303 |
| 27 | 9×10 | 9 | 10 | 0.00476 | NU206E |
| 28 | 9×12 | 10 | 11 | 0.00649 | NJ305ETN1 |
| 29 | 9×14 | 10 | 14 | 0.00855 | |
| 30 | 9×18 | 10 | 16 | 0.00956 | NUP2306M |
| 31 | 9×21 | 10 | 20 | 0.01220 | |
| 32 | 9.525×50.8 | 10 | 24 | 0.01470 | LY-N026 |
| 33 | 9.525×63.5 | 10 | 45.8 | 0.02820 | |
| 34 | 10×10 | 10 | 49.8 | 0.03057 | NAV3956(3074956) |
| 35 | 10×11 | 11 | 11 | 0.00780 | NF307 |
| 36 | 10×14 | 11 | 12 | 0.00850 | NF306E |
| 37 | 10×16 | 11 | 15 | 0.01100 | NJ2307M |
| 38 | 10×20 | 11 | 27 | 0.01990 | |
| 39 | 10×24 | 11.56 | 14 | 0.01100 | NUP2306EV |
| 40 | 10×45.8 | 12 | 12 | 0.01050 | N212 |
| 41 | 10×49.8 | 12 | 14 | 0.01230 | NJ211 |
| 42 | 11×11 | 12 | 15.5 | 0.01330 | |
| 43 | 11×12 | 12 | 16 | 0.01340 | LY-N036 |
| 44 | 11×15 | 12 | 18 | 0.01580 | |
| 45 | 11×27 | 12 | 21 | 0.01840 | NU2307EF1 |
| 46 | 11.56×14 | 12 | 30 | 0.02640 | |
| 47 | 12×12 | 12.1 | 14 | 0.01260 | NUP307EV/C9 |
| 48 | 12×14 | 12.5 | 48 | 0.04590 | |
| 49 | 12×15.5 | 12.5 | 62 | 0.05930 | NA4860 |

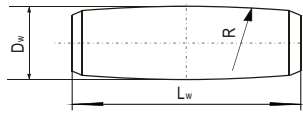
| No. | Designations | Dimensions | | Mass | Bearing No. for Reference |
|-----|--------------|------------|-------|---------|---------------------------|
| | | D_w | L_w | | |
| | | mm | | kg | |
| 50 | 12×16 | 13 | 13 | 0.01340 | |
| 51 | 12×18 | 13 | 15 | 0.01550 | NUP2207X1V/C9YB2 |
| 52 | 12×21 | 13 | 18 | 0.01850 | |
| 53 | 12×30 | 13 | 20 | 0.02050 | NNF5030-2LSV/YA1 |
| 54 | 12.1×14 | 13 | 33 | 0.03410 | |
| 55 | 12.5×48 | 12.5 | 48 | 0.04590 | |
| 56 | 12.5×62 | 12.5 | 62 | 0.05930 | NA4860 |
| 57 | 13×13 | 13 | 13 | 0.01340 | |
| 58 | 13×15 | 13 | 15 | 0.01550 | NUP2207X1V/C9YB2 |
| 59 | 13×18 | 13 | 18 | 0.01850 | |
| 60 | 13×20 | 13 | 20 | 0.02050 | NNF5030-2LSV/YA1 |
| 61 | 13×33 | 13 | 33 | 0.03410 | |
| 62 | 14×14 | 14 | 14 | 0.01600 | N309 |
| 63 | 14×15 | 14 | 15 | 0.01770 | NU308EPC/P5 |
| 64 | 14×17 | 14 | 17 | 0.01990 | NUP309ENV |
| 65 | 14×20 | 14 | 20 | 0.02400 | N2309M |
| 66 | 14×22 | 14 | 22 | 0.02590 | NJ2308E |
| 67 | 15×15 | 15 | 15 | 0.02060 | N216M |
| 68 | 15×16 | 15 | 16 | 0.02150 | |
| 69 | 15×17 | 15 | 17 | 0.02290 | N215EF1 |
| 70 | 15×22 | 15 | 22 | 0.03020 | NU2310M |
| 71 | 15×25 | 15 | 25 | 0.03400 | LY-N028 |
| 72 | 15×37.5 | 15 | 37.5 | 0.05150 | |
| 73 | 16×16 | 16 | 16 | 0.02500 | |
| 74 | 16×17 | 16 | 17 | 0.26300 | NH310EF1 |
| 75 | 16×20 | 16 | 20 | 0.03080 | 130.36.2700.04/34 |
| 76 | 16×24 | 16 | 24 | 0.03670 | NU2216EQ1/P63SO |
| 77 | 16×27 | 16 | 27 | 0.04140 | NJ2310EM/C9SO |
| 78 | 16×36 | 16 | 36 | 0.05620 | LY-N021 |
| 79 | 16×44.9 | 16 | 44.9 | 0.07020 | |
| 80 | 16×50 | 16 | 50 | 0.07780 | NAL4120M/YA |
| 81 | 16×61 | 16 | 61 | 0.09950 | |
| 82 | 16×80 | 16 | 80 | 0.12500 | |
| 83 | 17×17 | 17 | 17 | 0.03000 | N311M |
| 84 | 17×20 | 17 | 20 | 0.03500 | FC2842125 |
| 85 | 17×24 | 17 | 24 | 0.04200 | NU2311M |
| 86 | 17×27 | 17 | 27 | 0.04720 | FC2842155 |
| 87 | 18×18 | 18 | 18 | 0.03560 | N312 |
| 88 | 18×19 | 18 | 19 | 0.03730 | NU311EPC/P5 |
| 89 | 18×24 | 18 | 24 | 0.04600 | |
| 90 | 18×35 | 18 | 35 | 0.06820 | FC3854200 |
| 91 | 18.5×18 | 18.5 | 18 | 0.03760 | 1797/235 |
| 92 | 19×19 | 19 | 19 | 0.04230 | N313/V1 |
| 93 | 19×20 | 19 | 20 | 0.44000 | NJ312EF1 |
| 94 | 19×28 | 19 | 28 | 0.06180 | |
| 95 | 19×32 | 19 | 32 | 0.06950 | N2312EF1 |
| 96 | 20×20 | 20 | 20 | 0.04900 | N314M |
| 97 | 20×30 | 20 | 30 | 0.07200 | |
| 98 | 20×75 | 20 | 75 | 0.18400 | |



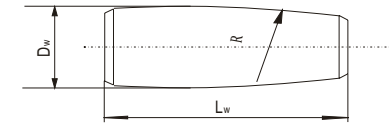
LYC Cylindrical Rollers

| No. | Designations | Dimensions | | Mass | Bearing No. for Reference |
|-----|--------------|----------------|----------------|---------|---------------------------|
| | | D _w | L _w | | |
| | | mm | | kg | |
| 99 | 21×21 | 21 | 21 | 0.05600 | NJ315Q1/S0 |
| 100 | 21×21.96 | 21 | 21.96 | 0.05870 | NJ219ETN1/P54YB1 |
| 101 | 21×22 | 21 | 22 | 0.05870 | NJ313E |
| 102 | 21×30 | 21 | 30 | 0.08100 | |
| 103 | 21×32 | 21 | 32 | 0.08480 | NU2313M |
| 104 | 21×34 | 21 | 34 | 0.09020 | FC4666206/SO |
| 105 | 21×46 | 21 | 46 | 0.13400 | LY-N018 |
| 106 | 22×12 | 22 | 12 | 0.03470 | |
| 107 | 22×21.5 | 22 | 21.5 | 0.06560 | D2797/695G2 |
| 108 | 22×22 | 22 | 22 | 0.06560 | N315M |
| 109 | 22×24 | 22 | 24 | 0.07020 | |
| 110 | 22×26.5 | 22 | 26.5 | 0.07830 | N612/C9 |
| 111 | 22×34 | 22 | 34 | 0.10100 | LY-N006 |
| 112 | 22×48 | 22 | 48 | 0.14200 | |
| 113 | 23×34 | 23 | 34 | 0.10800 | NNU4136X3 |
| 114 | 23×40 | 23 | 40 | 0.12800 | LY-N012 |
| 115 | 23×48 | 23 | 48 | 0.15400 | |
| 116 | 24×12 | 24 | 12 | 0.04230 | |
| 117 | 24×16 | 24 | 16 | 0.05640 | N224M |
| 118 | 24×24 | 24 | 24 | 0.08200 | NU2317M |
| 119 | 24×36 | 24 | 36 | 0.12500 | NU2315M |
| 120 | 24×38 | 24 | 38 | 0.13400 | FCDP5678275/HCYB |
| 121 | 24×48 | 24 | 48 | 0.16600 | FC5274200/YA |
| 122 | 24×52 | 24 | 52 | 0.18000 | 2797/1010G2 |
| 123 | 25×24.5 | 25 | 24.5 | 0.09400 | NU318EQ1/S0 |
| 124 | 25×25 | 25 | 25 | 0.09390 | NU316EF1 |
| 125 | 25×27 | 25 | 27 | 0.10200 | 7397/2700G2/34 |
| 126 | 25×30 | 25 | 30 | 0.11500 | NN4964K/W33 |
| 127 | 25×36 | 25 | 36 | 0.13800 | NNAL6036X2M |
| 128 | 25×80 | 25 | 80 | 0.30600 | |
| 129 | 26×26 | 26 | 26 | 0.10600 | N317EF1 |
| 130 | 26×28 | 26 | 28 | 0.11200 | |
| 131 | 26×40 | 26 | 40 | 0.16500 | NU636M |
| 132 | 26×60 | 26 | 60 | 0.24700 | 2797/2768 |
| 133 | 28×27.5 | 28 | 27.5 | 0.13200 | NU226EM |
| 134 | 28×28 | 28 | 28 | 0.13300 | NU228EL |
| 135 | 28×30 | 28 | 30 | 0.14100 | |
| 136 | 28×44 | 28 | 44 | 0.26300 | |
| 137 | 30×29.5 | 30 | 29.5 | 0.16200 | 2797/870G2 |
| 138 | 30×30 | 30 | 30 | 0.16400 | NU230EQ1/S0 |
| 139 | 30×36 | 30 | 36 | 0.19500 | NN4968K |
| 140 | 30×38 | 30 | 38 | 0.20700 | FC6084240 |
| 141 | 30×40 | 30 | 40 | 0.12900 | FC5882240A |
| 142 | 30×46 | 30 | 46 | 0.24900 | NF28/560M |
| 143 | 30×47.956 | 30 | 47.956 | 0.26200 | NJ3224X3Q1/S0 |
| 144 | 30×52 | 30 | 52 | 0.28400 | FCD6084300 |
| 145 | 30×60 | 30 | 60 | 0.33000 | NU3048EM |
| 146 | 32×24 | 32 | 24 | 0.14450 | N640M |
| 147 | 32×32 | 32 | 32 | 0.19900 | NU234EQ1/S0 |

| No. | Designations | Dimensions | | Mass | Bearing No. for Reference |
|-----|--------------|----------------|----------------|---------|---------------------------|
| | | D _w | L _w | | |
| | | mm | | kg | |
| 148 | 32×36 | 32 | 36 | 0.22500 | |
| 149 | 32×51.948 | 32 | 51.948 | 0.32500 | NJ3226X1Q1/S0 |
| 150 | 32×52 | 32 | 52 | 0.32600 | NJ2320Q1/S0 |
| 151 | 32.15×36 | 32.15 | 36 | 0.22500 | |
| 152 | 34×34 | 34 | 34 | 0.23400 | NU1052F1 |
| 153 | 34×46 | 34 | 46 | 0.31600 | |
| 154 | 34×50 | 34 | 50 | 0.35260 | N646M |
| 155 | 34×55 | 34 | 55 | 0.38600 | NU2322EM |
| 156 | 34×68 | 34 | 68 | 0.48100 | NNTB626/YA |
| 157 | 35×65 | 35 | 65 | 0.48700 | FCD6896350 |
| 158 | 36×36 | 36 | 36 | 0.28600 | NN3060K |
| 159 | 38×22 | 38 | 22 | 0.19400 | |
| 160 | 38×38 | 38 | 38 | 0.32700 | N661L |
| 161 | 38×42.94 | 38 | 42.94 | 0.37700 | LY-N013 |
| 162 | 38×61.952 | 38 | 61.952 | 0.54100 | NJ2324EM/C9 SO |
| 163 | 38×62 | 38 | 62 | 0.54100 | NU2324EM |
| 164 | 40×39.887 | 40 | 39.887 | 0.39000 | N326EQ1H/P54 |
| 165 | 40×40 | 40 | 40 | 0.39000 | NN3072K |
| 166 | 40×58 | 40 | 58 | 0.55000 | |
| 167 | 40×65 | 40 | 65 | 0.63600 | |
| 168 | 40×65 | 40 | 65 | 0.63600 | NU2326EM |
| 169 | 40×70 | 40 | 70 | 0.68600 | NU644M |
| 170 | 40×80 | 40 | 80 | 0.78000 | |
| 171 | 45×45 | 45 | 45 | 0.55300 | NU330EQ1/S0 |
| 172 | 45×75 | 45 | 75 | 0.92230 | NU2334M |
| 173 | 48×80 | 48 | 80 | 1.12000 | NU2332EM1 |
| 174 | 50×50 | 50 | 50 | 0.76500 | NU426Q1 |
| 175 | 52×52 | 52 | 52 | 0.85000 | NU426M |
| 176 | 52×90 | 52 | 90 | 1.47000 | NU2336EM |
| 177 | 54×54 | 54 | 54 | 0.97100 | NJ428M |



Type D

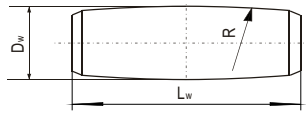


Type F

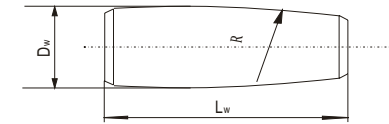
LYC Spherical Rollers

| No. | Designations | Dimensions | | | Mass | Bearing No. for Reference |
|-----|--------------|----------------|----------------|-------|---------|---------------------------|
| | | D _w | L _w | R | | |
| | | mm | | | kg | |
| 1 | 6.939×7.925 | 6.939 | 7.925 | 19.71 | 0.0021 | 20208 |
| 2 | 11×11.4 | 11 | 11.4 | 35.5 | 0.0089 | 20209 |
| 3 | 11.4×12 | 11.4 | 12 | 38 | 0.0090 | 22205CA |
| 4 | 6.8×6.2 | 6.8 | 6.2 | 22.5 | 0.0017 | 22206C |
| 5 | 8×7 | 8 | 7 | 27 | 0.0026 | 22210C |
| 6 | 10×8.5 | 10 | 8.5 | 39.5 | 0.0050 | 22210CA |
| 7 | 10×8 | 10 | 8 | 39.5 | 0.0048 | 22211C |
| 8 | 11.5×9 | 11.5 | 9 | 44.3 | 0.0710 | 22212C |
| 9 | 12.5×10 | 12.5 | 10 | 48.7 | 0.0093 | 22213C |
| 10 | 13.5×11.5 | 13.5 | 11.5 | 63 | 0.0124 | 22214C |
| 11 | 13.8×11.2 | 13.8 | 11.2 | 55 | 0.0127 | 22215C |
| 12 | 13.5×11 | 13.5 | 11 | 58 | 0.0120 | 22216C |
| 13 | 14.5×12 | 14.5 | 12 | 62 | 0.0150 | 22217C |
| 14 | 16.6×13 | 16.6 | 13 | 66 | 0.0214 | 22218C |
| 15 | 17.5×14.5 | 17.5 | 14.5 | 71.5 | 0.0250 | 22219C |
| 16 | 18.5×16 | 18.5 | 16 | 74.5 | 0.0325 | 22220C |
| 17 | 20×16.5 | 20 | 16.5 | 78 | 0.0400 | 22222C |
| 18 | 22×20 | 22 | 20 | 89 | 0.0558 | 22224C |
| 19 | 24×21.5 | 24 | 21.5 | 96 | 0.0750 | 22226C |
| 20 | 25.5×24.4 | 25.5 | 24.4 | 103 | 0.0935 | 22228/W33 |
| 21 | 27.5×25.8 | 27.5 | 25.8 | 110.5 | 0.1150 | 22228CA/W33 |
| 22 | 28.5×25 | 28.5 | 25 | 112 | 0.1200 | 22230C |
| 23 | 31×27 | 31 | 27 | 121 | 0.1460 | 22232CA/W33 |
| 24 | 32.5×30 | 32.5 | 30 | 129 | 0.1940 | 22238CA |
| 25 | 37×34.8 | 37 | 34.8 | 51.5 | 0.2800 | 22244CA/W33 |
| 26 | 46×41 | 46 | 41 | 177 | 0.5040 | 22308C |
| 27 | 13.3×11.9 | 13.3 | 11.9 | 39.5 | 0.0123 | 22309C |
| 28 | 14.5×13 | 14.5 | 13 | 44 | 0.01600 | 22309C |
| 29 | 16×14.6 | 16 | 14.6 | 48.5 | 0.02190 | 22310C |
| 30 | 17×15.9 | 17 | 15.9 | 52.5 | 0.02690 | 22311C |
| 31 | 18.5×17 | 18.5 | 17 | 57 | 0.03410 | 22312C |
| 32 | 18×16.5 | 18 | 16.5 | 57.5 | 0.03060 | 22312CA/W33 |
| 33 | 19.5×17 | 19.5 | 17 | 61.5 | 0.03800 | 22313CA |
| 34 | 20.5×19.5 | 20.5 | 19.5 | 66.5 | 0.05000 | 22314C |
| 35 | 20.5×18.5 | 20.5 | 18.5 | 66 | 0.04430 | 22314CA/W33 |
| 36 | 22×20 | 22 | 20 | 70 | 0.05680 | 22315CK |
| 37 | 23×22 | 23 | 22 | 75 | 0.06800 | 22316C |
| 38 | 22.5×25 | 22.5 | 25 | 84 | 0.09470 | 22318C |
| 39 | 27×24 | 27 | 24 | 84 | 0.10300 | 22318CA |
| 40 | 27.5×25 | 27.5 | 25 | 88.5 | 0.10800 | 22319CA/W33 |
| 41 | 29×27.5 | 29 | 27.5 | 95 | 0.14100 | 22320C |
| 42 | 28.8×27.25 | 28.8 | 27.25 | 96.5 | 0.13000 | 22320CA |
| 43 | 32×30.72 | 32 | 30.72 | 106.5 | 0.18000 | 22322CA |
| 44 | 35×32.5 | 35 | 32.5 | 112.5 | 0.23300 | 22324CK |
| 45 | 37×33.67 | 37 | 33.67 | 124 | 0.26500 | 22326CA |
| 46 | 40×38.5 | 40 | 38.5 | 133 | 0.36000 | 22328CA |
| 47 | 42.5×39.63 | 42.5 | 39.63 | 142.5 | 0.41000 | |
| 48 | 20.5×24 | 20.5 | 24 | 96 | 0.05880 | 23126CA/W33 |
| 49 | 21×26.5 | 21 | 26.5 | 103 | 0.06770 | 23128CA/W33 |

| No. | Designations | Dimensions | | | Mass | Bearing No. for Reference |
|-----|--------------|----------------|----------------|-------|---------|---------------------------|
| | | D _w | L _w | R | | |
| | | mm | | | kg | |
| 50 | 23×30 | 23 | 30 | 113.5 | 0.09680 | 23130CA/W33 |
| 51 | 29.5×38.5 | 29.5 | 38.5 | 135 | 0.19300 | 23136C/W33 |
| 52 | 32×40 | 32 | 40 | 145 | 0.23700 | 23138CA/W33 |
| 53 | 37×48 | 37 | 48 | 168 | 0.37800 | 23144CA |
| 54 | 38.5×49 | 38.5 | 49 | 182 | 0.41400 | 232148CA |
| 55 | 17.5×20.5 | 17.5 | 20.5 | 72 | 0.03530 | 23218C |
| 56 | 20.5×23.5 | 20.5 | 23.5 | 81 | 0.05560 | 23220C |
| 57 | 22.5×27 | 22.5 | 27 | 90 | 0.07640 | 23220C |
| 58 | 23.5×30 | 23.5 | 30 | 97 | 0.09170 | 23224C |
| 59 | 25×32 | 25 | 32 | 84 | 0.11100 | 23226C |
| 60 | 27.5×35 | 27.5 | 35 | 92 | 0.14700 | 23228C |
| 61 | 30×38.5 | 30 | 38.5 | 124.5 | 0.19100 | 23230C/W33 |
| 62 | 33×40 | 33 | 40 | 41.5 | 0.24600 | 23232CA |
| 63 | 34.5×44 | 34.5 | 44 | 51.5 | 0.29900 | 23234CA |
| 64 | 35×45 | 35 | 45 | 59 | 0.31500 | 23236CA |
| 65 | 37.5×48 | 37.5 | 48 | 180 | 0.38600 | 23238C |
| 66 | 37.5×48 | 37.5 | 48 | 64 | 0.38600 | 23238CA/C3W3YB4 |
| 67 | 12.4×20 | 12.4 | 20 | 100 | 0.17300 | 24018C |
| 68 | 15×23 | 15 | 23 | 83 | 0.02940 | 24022C |
| 69 | 18.5×27 | 18.5 | 27 | 97 | 0.05000 | 24028C |
| 70 | 20×32 | 20 | 32 | 115 | 0.07240 | 24032C |
| 71 | 29×47 | 29 | 47 | 55.5 | 0.22200 | 24048CA/W33 |
| 72 | 35×53.5 | 35 | 53.5 | 59.5 | 0.36800 | 24052CA |
| 73 | 17×27 | 17 | 27 | 68.6 | 0.04370 | 24122CA/W33 |
| 74 | 20×31 | 20 | 31 | 77.3 | 0.06940 | 24124CA |
| 75 | 21×32 | 21 | 32 | 86.1 | 0.07970 | 24128CA/W33 |
| 76 | 26×39 | 26 | 39 | 93.3 | 0.14800 | 24130CA |
| 77 | 32×47 | 32 | 47 | 109.3 | 0.27100 | 24138CA |
| 78 | 36×56 | 36 | 56 | 117.5 | 0.40300 | 24140C/W33 |
| 79 | 15.5×24 | 15.5 | 24 | 84 | 0.03270 | 4053124Y |
| 80 | 20×32 | 20 | 32 | 92 | 0.06790 | 4053724Y |
| 81 | 28.5×44 | 28.5 | 44 | 124.5 | 0.20000 | 4053732Y |
| 82 | 13.5×15.5 | 13.5 | 15.5 | 41.5 | 0.01530 | E-3-314 |
| 83 | 16.5×20 | 16.5 | 20 | 51.5 | 0.02910 | E3-315 |
| 84 | 14×18 | 14 | 18 | 59 | 0.01980 | LY-2013 |
| 85 | 30×40 | 30 | 40 | 180 | 0.21200 | 23052 |
| 86 | 18×13 | 18 | 13 | 64 | 0.02520 | |
| 87 | 20.5×29 | 20.5 | 29 | 100 | 0.06720 | |
| 88 | 18.5×27.5 | 18.5 | 27.5 | 83 | 0.05220 | |
| 89 | 20×32.5 | 20 | 32.5 | 97 | 0.07240 | |
| 90 | 26×41 | 26 | 41 | 115 | 0.14700 | |
| 91 | 13.5×11.067 | 13.5 | 11.067 | 55.5 | 0.01190 | |
| 92 | 14×12.065 | 14 | 12.065 | 59.5 | 0.01390 | |
| 93 | 17×14.688 | 17 | 14.688 | 68.6 | 0.02700 | |
| 94 | 20×16.7 | 20 | 16.7 | 77.3 | 0.03800 | |
| 95 | 23×19.328 | 23 | 19.328 | 86.1 | 0.05800 | |
| 96 | 25×21.149 | 25 | 21.149 | 93.3 | 0.07500 | |
| 97 | 29.5×24.738 | 29.5 | 24.738 | 109.3 | 0.12200 | |
| 98 | 31×26.572 | 31 | 26.572 | 117.5 | 0.12200 | |



Type D

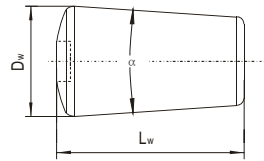


Type F

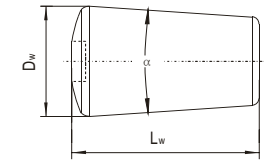
LYC Spherical Rollers

| No. | Designations | Dimensions | | | Mass | Bearing No. for Reference |
|-----|--------------|----------------|----------------|-------|---------|---------------------------|
| | | D _w | L _w | R | | |
| | | mm | | | kg | |
| 99 | 34×29.198 | 34 | 29.198 | 125.7 | 0.16300 | |
| 100 | 36×31.21 | 36 | 31.21 | 133.9 | 0.19300 | |
| 101 | 35.5×31.278 | 35.5 | 31.278 | 138.7 | 0.18800 | |
| 102 | 37×33.397 | 37 | 33.397 | 146.9 | 0.26200 | 22238 |
| 103 | 39×35.608 | 39 | 35.608 | 155.1 | 0.31700 | |
| 104 | 45×39.25 | 45 | 39.25 | 172 | 0.43100 | |
| 105 | 16.5×14.171 | 16.5 | 14.171 | 47.2 | 0.02070 | |
| 106 | 23×18.611 | 23 | 18.611 | 64.8 | 0.05400 | |
| 107 | 26×20.807 | 26 | 20.807 | 73.6 | 0.07800 | |
| 108 | 26×21.831 | 26 | 21.831 | 77.4 | 0.07880 | |
| 109 | 28.5×23.958 | 28.5 | 23.958 | 86 | 0.10100 | |
| 110 | 38×31.497 | 38 | 31.497 | 111.5 | 0.25500 | |
| 111 | 45×41.481 | 45 | 41.481 | 143.4 | 0.43000 | |
| 112 | 46×43.869 | 46 | 43.869 | 152 | 0.47300 | |
| 113 | 48×44.342 | 48 | 44.342 | 165.5 | 0.60100 | |
| 114 | 50×48.3 | 50 | 48.3 | 168 | 0.65000 | |
| 115 | 22×24.594 | 22 | 24.594 | 127 | 0.07100 | |
| 116 | 23×28.051 | 23 | 28.051 | 146 | 0.08800 | |
| 117 | 13.5×11.632 | 13.5 | 11.632 | 38.5 | 0.01220 | 22308 |
| 118 | 16.5×14.171 | 16.5 | 14.171 | 47.2 | 0.02070 | 22310 |
| 119 | 19.5×16.19 | 19.5 | 16.19 | 56 | 0.03200 | 22312 |
| 120 | 14×16.641 | 14 | 16.641 | 77 | 0.01910 | 23022 |
| 121 | 13.5×17.833 | 13.5 | 17.833 | 82 | 0.01900 | 23024 |
| 122 | 18×20.648 | 18 | 20.648 | 102.5 | 0.03940 | 23030 |
| 123 | 19×22.05 | 19 | 22.05 | 109.5 | 0.04690 | 23032 |
| 124 | 21×25.058 | 21 | 25.058 | 118.5 | 0.06490 | 23034 |
| 125 | 29×33.084 | 29 | 33.084 | 155 | 0.16300 | 23044 |
| 126 | 15.5×21.06 | 15.5 | 21.06 | 76 | 0.03000 | 23121 |
| 127 | 15.5×21.062 | 15.5 | 21.062 | 78 | 0.02800 | 23122 |
| 128 | 31×38.13 | 31 | 38.13 | 145.5 | 0.21200 | 23138 |
| 129 | 17.5×22.072 | 17.5 | 22.072 | 86.5 | 0.03930 | 24124 |
| 130 | 20.9×25.29 | 20.9 | 25.29 | 180 | 0.06280 | 29238 |
| 131 | 27×34.57 | 27 | 34.57 | 160.5 | 0.13600 | 29238 |
| 132 | 26.1×34.34 | 26.1 | 34.34 | 238.5 | 0.13300 | 29252 |
| 133 | 25.8×33.317 | 25.8 | 33.317 | 255.5 | 0.12700 | 29256 |
| 134 | 24.8×31.033 | 24.8 | 31.033 | 138 | 0.10000 | 29324 |
| 135 | 28×34.297 | 28 | 34.297 | 124 | 0.13900 | 29418 |
| 136 | 31×38.385 | 31 | 38.385 | 138 | 0.19000 | 29420 |
| 137 | 40×49.149 | 40 | 49.149 | 177 | 0.40500 | 29426 |
| 138 | 15.5×18.442 | 15.5 | 18.442 | 90.5 | 0.02730 | |
| 139 | 16×20.439 | 16 | 20.439 | 96 | 0.03060 | |
| 140 | 22.5×28.064 | 22.5 | 28.064 | 127 | 0.08310 | |
| 141 | 23.5×28.266 | 23.5 | 28.266 | 132 | 0.09160 | |
| 142 | 25×31.271 | 25 | 31.271 | 141 | 0.11400 | |
| 143 | 28×34.674 | 28 | 34.674 | 164.5 | 0.15900 | |
| 144 | 42×54.413 | 42 | 54.413 | 179.5 | 0.55000 | |
| 145 | 28.5×33.101 | 28.5 | 33.101 | 131 | 0.14000 | |
| 146 | 31×42.102 | 31 | 42.102 | 147.3 | 0.22300 | |
| 147 | 37×48.132 | 37 | 48.132 | 168 | 0.37800 | |

| No. | Designations | Dimensions | | | Mass | Bearing No. for Reference |
|-----|--------------|----------------|----------------|---------|---------|---------------------------|
| | | D _w | L _w | R | | |
| | | mm | | | kg | |
| 148 | 35×49.524 | 35 | 49.524 | 180.225 | 0.34800 | |
| 149 | 25.4×38.087 | 25.4 | 38.087 | 124.5 | 0.13800 | |
| 150 | 21×22.241 | 21 | 22.241 | 186 | 0.05760 | |
| 151 | 21×22.208 | 21 | 22.208 | 200 | 0.06160 | |
| 152 | 26×27.774 | 26 | 27.774 | 241 | 0.11300 | |
| 153 | 20.5×21.82 | 20.5 | 21.82 | 125.5 | 0.05380 | |
| 154 | 26×28.36 | 26 | 28.36 | 165 | 0.12300 | |
| 155 | 28×30.4 | 28 | 30.4 | 180 | 0.13200 | |
| 156 | 32×34.48 | 32 | 34.48 | 200 | 0.20900 | |
| 157 | 36×38.5 | 36 | 38.5 | 238 | 0.29400 | |
| 158 | 36×38.524 | 36 | 38.524 | 251 | 0.30000 | |
| 159 | 44×47.964 | 44 | 47.964 | 222 | 0.53700 | |
| 160 | 27.5×31.125 | 27.5 | 31.125 | 123 | 0.13600 | 23132K |
| 161 | 40×47.212 | 40 | 47.212 | 163 | 0.43200 | 23240/W33 |
| 162 | 29.5×44.13 | 29.5 | 44.13 | 137.5 | 0.21700 | 24136/W33 |
| 163 | 33.8×32.846 | 33.8 | 32.846 | 106 | 0.20400 | |
| 164 | 26×33.034 | 26 | 33.034 | 166.5 | 0.13300 | |
| 165 | 25.4×38.087 | 25.4 | 38.087 | 124.5 | 0.13800 | |
| 166 | 18×24.867 | 18 | 24.867 | 111.5 | 0.05720 | |
| 167 | 31×33.658 | 31 | 33.658 | 150 | 0.18800 | |
| 168 | 35.5×60.149 | 35.5 | 60.149 | 169 | 0.41800 | LZK-7 |



Type K

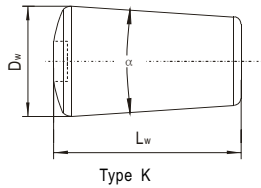


Type K

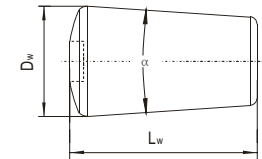
LYC Tapered Rollers

| No. | Designations | Dimensions | | | Mass | Bearing No. for Reference |
|-----|--------------------|----------------|----------------|-------|---------|---------------------------|
| | | D _w | L _w | R | | |
| | | mm | | | kg | |
| 1 | 5.612×8.45×4° | 5.612 | 8.45 | 4° | 0.00146 | 30203 |
| 2 | 6.631×10.08×4° | 6.631 | 10.08 | 4° | 0.00242 | 30204 |
| 3 | 6.799×10.92×4° | 6.799 | 10.92 | 4° | 0.00274 | 30205 |
| 4 | 8.111×11.64×4° | 8.111 | 11.64 | 4° | 0.00420 | 30206 |
| 5 | 9.437×12.47×4° | 9.437 | 12.47 | 4° | 0.00615 | 30207 |
| 6 | 10.5×13.09×4° | 10.5 | 13.09 | 4° | 0.00803 | 30208 |
| 7 | 10.833×13.9×4° | 10.833 | 13.9 | 4° | 0.00906 | 30210 |
| 8 | 12.439×14.99×4° | 12.439 | 14.99 | 4° | 0.01300 | 30211 |
| 9 | 13.493×15.4×4° | 13.493 | 15.4 | 4° | 0.01570 | 30212 |
| 10 | 14.903×16.63×4° | 14.903 | 16.63 | 4° | 0.02080 | 30213 |
| 11 | 15.043×17.69×4° | 15.043 | 17.69 | 4° | 0.02240 | 30214 |
| 12 | 15.238×18.54×4° | 15.238 | 18.54 | 4° | 0.02400 | 30215 |
| 13 | 16.858×19.25×4° | 16.858 | 19.25 | 4° | 0.03060 | 30216 |
| 14 | 17.939×19.46×4° | 17.939 | 19.46 | 4° | 0.03530 | 30217 |
| 15 | 19.127×21.97×4° | 19.127 | 21.97 | 4° | 0.04510 | 30218 |
| 16 | 20.328×22.78×4° | 20.328 | 22.78 | 4° | 0.05290 | 30219 |
| 17 | 21.479×25.19×4° | 21.479 | 25.19 | 4° | 0.06510 | 30220 |
| 18 | 22.62×25.7×4° | 22.62 | 25.7 | 4° | 0.07380 | 30221 |
| 19 | 23.929×28.33×4° | 23.929 | 28.33 | 4° | 0.09100 | 30222 |
| 20 | 24.935×29.625×4° | 24.935 | 29.625 | 4° | 0.10300 | 30224 |
| 21 | 26.82×29.18×4° | 26.82 | 29.18 | 4° | 0.11800 | 30226 |
| 22 | 30.96×32.151×4° | 30.96 | 32.151 | 4° | 0.17500 | 30230 |
| 23 | 33.28×33.679×4° | 33.28 | 33.679 | 4° | 0.21200 | 30232 |
| 24 | 6.973×8.92×4° | 6.973 | 8.92 | 4° | 0.00241 | 30302 |
| 25 | 7.811×9.93×4° | 7.811 | 9.93 | 4° | 0.00337 | 30303 |
| 26 | 8.216×10.75×4° | 8.216 | 10.75 | 4° | 0.00402 | 30304 |
| 27 | 9.982×12.28×4° | 9.982 | 12.28 | 4° | 0.00682 | 30305 |
| 28 | 10.987×13.42×4° | 10.987 | 13.42 | 4° | 0.00903 | 30306 |
| 29 | 12.383×15.45×4° | 12.383 | 15.45 | 4° | 0.01320 | 30307 |
| 30 | 12.662×16.81×4° | 12.662 | 16.81 | 4° | 0.01490 | 30308 |
| 31 | 14.17×18.12×4° | 14.17 | 18.12 | 4° | 0.02020 | 30309 |
| 32 | 15.65×19.77×4° | 15.65 | 19.77 | 4° | 0.02690 | 30310 |
| 33 | 17.102×21.5×4° | 17.102 | 21.5 | 4° | 0.03500 | 31311 |
| 34 | 18.533×21.76×4° | 18.533 | 21.76 | 4° | 0.04180 | 30312 |
| 35 | 20.068×24.08×4° | 20.068 | 24.08 | 4° | 0.05420 | 30313 |
| 36 | 22.958×27.5×4° | 22.958 | 27.5 | 4° | 0.08100 | 30315 |
| 37 | 24.501×27.636×4° | 24.501 | 27.636 | 4° | 0.09340 | 30316 |
| 38 | 25.722×29.35×4° | 25.722 | 29.35 | 4° | 0.10900 | 30317 |
| 39 | 27.182×31.93×4° | 27.182 | 31.93 | 4° | 0.13200 | 30318 |
| 40 | 30.47×33.272×4° | 30.47 | 33.272 | 4° | 0.16400 | 30320 |
| 41 | 33.869×34.73×4° | 33.869 | 34.73 | 4° | 0.22600 | 30322 |
| 42 | 39.4×42.427×4° | 39.4 | 42.427 | 4° | 0.37200 | 30326 |
| 43 | 6.74×11.95×3°10' | 6.74 | 11.95 | 3°10' | 0.00300 | 30607 |
| 44 | 21.9×22.98×10° | 21.9 | 22.98 | 10° | 0.05490 | 30611 |
| 45 | 17×31.33×3°30' | 17 | 31.33 | 3°30' | 0.04930 | 30613 |
| 46 | 15.092×33.6×2°30' | 15.092 | 33.6 | 2°30' | 0.04230 | 30615 |
| 47 | 15.687×32.09×2°30' | 15.687 | 32.09 | 2°30' | 0.04400 | 30616 |
| 48 | 17×33.09×2°28' | 17 | 33.09 | 2°28' | 0.05370 | 30619 |
| 49 | 8.88×12.07×8°40' | 8.88 | 12.07 | 8°40' | 0.00466 | 31305 |

| No. | Designations | Dimensions | | | Mass | Bearing No. for Reference |
|-----|--------------------|----------------|----------------|-------|---------|---------------------------|
| | | D _w | L _w | R | | |
| | | mm | | | kg | |
| 50 | 11.649×15.21×8°40' | 11.649 | 15.21 | 8°40' | 0.01020 | 31307 |
| 51 | 13.158×16.75×8°40' | 13.158 | 16.75 | 8°40' | 0.01440 | 31308 |
| 52 | 14.575×17.82×8°40' | 14.575 | 17.82 | 8°40' | 0.01890 | 31309 |
| 53 | 15.931×18.3×8°40' | 15.931 | 18.3 | 8°40' | 0.02350 | 31310 |
| 54 | 17.291×20.63×8°40' | 17.291 | 20.63 | 8°40' | 0.03100 | 31311 |
| 55 | 18.801×21.76×8°40' | 18.801 | 21.76 | 8°40' | 0.03880 | 31312 |
| 56 | 20.36×22.89×8°40' | 20.36 | 22.89 | 8°40' | 0.04810 | 31313 |
| 57 | 21.671×24.41×8°40' | 21.671 | 24.41 | 8°40' | 0.05810 | 31314 |
| 58 | 23.182×25.44×8°40' | 23.182 | 25.44 | 8°40' | 0.06960 | 31315 |
| 59 | 25.981×27.88×8°40' | 25.981 | 27.88 | 8°40' | 0.09640 | 31317 |
| 60 | 18.6×25.32×8° | 18.6 | 25.32 | 8° | 0.04360 | 31611 |
| 61 | 21×26.37×8° | 21 | 26.37 | 8° | 0.05880 | 31613 |
| 62 | 5.311×10.84×3°50' | 5.311 | 10.84 | 3°50' | 0.00160 | 32005 |
| 63 | 6.73×12.31×3°50' | 6.73 | 12.31 | 3°50' | 0.00300 | 32007 |
| 64 | 6.846×13.7×3° | 6.846 | 13.7 | 3° | 0.00353 | 32008 |
| 65 | 8.575×16.94×3° | 8.575 | 16.94 | 3° | 0.00685 | 32011 |
| 66 | 9.328×16.68×3°16' | 9.328 | 16.68 | 3°16' | 0.00799 | 32012 |
| 67 | 8.575×16.06×3° | 8.575 | 16.06 | 3° | 0.00650 | 32013 |
| 68 | 9.775×17.28×3° | 9.775 | 17.28 | 3° | 0.00920 | 32015 |
| 69 | 11.5×20.58×3° | 11.5 | 20.58 | 3° | 0.01510 | 32016 |
| 70 | 11.5×19.58×3° | 11.5 | 19.58 | 3° | 0.01440 | 32017 |
| 71 | 12.82×21.58×3° | 12.82 | 21.58 | 3° | 0.01980 | 32018 |
| 72 | 14.05×24.09×3° | 14.05 | 24.09 | 3° | 0.02650 | 32021 |
| 73 | 15.38×27.05×3° | 15.38 | 27.05 | 3° | 0.03560 | 32022 |
| 74 | 17.94×31.12×3° | 17.94 | 31.12 | 3° | 0.05580 | 32026 |
| 75 | 22.8×38.8×3° | 22.8 | 38.8 | 3° | 0.11300 | 32034 |
| 76 | 25.68×47.007×3° | 25.68 | 47.007 | 3° | 0.17200 | 32036 |
| 77 | 25.68×47.007×3° | 25.68 | 47.007 | 3° | 0.17200 | 32038 |
| 78 | 28×50.131×3° | 28 | 50.131 | 3° | 0.21900 | 32040 |
| 79 | 26×52.575×2° | 26 | 52.575 | 2° | 0.20200 | 32048 |
| 80 | 7.25×13.54×4° | 7.25 | 13.54 | 4° | 0.00380 | 32205 |
| 81 | 8.195×14.48×4° | 8.195 | 14.48 | 4° | 0.00520 | 32206 |
| 82 | 9.542×17.34×4° | 9.542 | 17.34 | 4° | 0.00846 | 32207 |
| 83 | 10.631×16.49×4° | 10.631 | 16.49 | 4° | 0.01020 | 32208 |
| 84 | 10.631×16.49×4° | 10.631 | 16.49 | 4° | 0.01020 | 32209 |
| 85 | 10.91×16.94×4° | 10.91 | 16.94 | 4° | 0.01100 | 32210 |
| 86 | 12.516×18.45×4° | 12.516 | 18.45 | 4° | 0.01580 | 32211 |
| 87 | 13.682×21.21×4° | 13.682 | 21.21 | 4° | 0.02170 | 32212 |
| 88 | 15.078×23.13×4° | 15.078 | 23.13 | 4° | 0.02870 | 32213 |
| 89 | 15.218×23.81×4° | 15.218 | 23.81 | 4° | 0.03010 | 32214 |
| 90 | 15.427×23.86×4° | 15.427 | 23.86 | 4° | 0.03100 | 32215 |
| 91 | 17.068×23.85×4° | 17.068 | 23.85 | 4° | 0.03830 | 32216 |
| 92 | 18.233×27.56×4° | 18.233 | 27.56 | 4° | 0.05010 | 32217 |
| 93 | 19.477×31.4×4° | 19.477 | 31.4 | 4° | 0.05460 | 32218 |
| 94 | 20.628×33.48×4° | 20.628 | 33.48 | 4° | 0.07740 | 32219 |
| 95 | 21.85×35.99×4° | 21.85 | 35.99 | 4° | 0.09320 | 32220 |
| 96 | 23×38.52×4° | 23 | 38.52 | 4° | 0.11000 | 32221 |
| 97 | 24.329×42.01×4° | 24.329 | 42.01 | 4° | 0.13400 | 32222 |
| 98 | 25.307×45.72×4° | 25.307 | 45.72 | 4° | 0.15700 | 32224 |



Type K

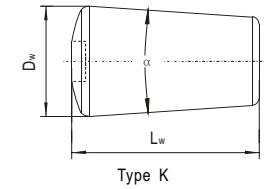
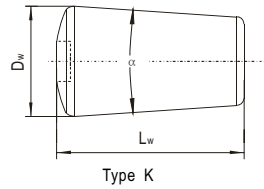


Type K

LYC Tapered Rollers

| No. | Designations | Dimensions | | | Mass | Bearing No. for Reference |
|-----|--------------------|------------|--------|-------|---------|---------------------------|
| | | D_w | L_w | R | | |
| | | mm | | | kg | |
| 99 | 27.165×49.191×4° | 27.165 | 49.191 | 4° | 0.19500 | 32226 |
| 100 | 29.54×53.699×4° | 29.54 | 53.699 | 4° | 0.25100 | 32228 |
| 101 | 31.693×56.9×4° | 31.693 | 56.9 | 4° | 0.30700 | 32230 |
| 102 | 36.592×67.88×4° | 36.592 | 67.88 | 4° | 0.48600 | 32236 |
| 103 | 40.263×72.07×4° | 40.263 | 72.07 | 4° | 0.62700 | 32238 |
| 104 | 45.086×77.86×4° | 45.086 | 77.86 | 4° | 0.85400 | 32240 |
| 105 | 8.195×14.48×4° | 8.195 | 14.48 | 4° | 0.00523 | 32304 |
| 106 | 10.017×17.52×4° | 10.017 | 17.52 | 4° | 0.00946 | 32305 |
| 107 | 11.064×20.28×4° | 11.064 | 20.28 | 4° | 0.01330 | 32306 |
| 108 | 12.383×22.11×4° | 12.383 | 22.11 | 4° | 0.01820 | 32307 |
| 109 | 12.634×23.1×4° | 12.634 | 23.1 | 4° | 0.01970 | 32308 |
| 110 | 14.24×26.33×4° | 14.24 | 26.33 | 4° | 0.02850 | 32309 |
| 111 | 15.706×29.7×4° | 15.706 | 29.7 | 4° | 0.03900 | 32310 |
| 112 | 17.102×30.25×4° | 17.102 | 30.25 | 4° | 0.04760 | 32311 |
| 113 | 18.533×32.6×4° | 18.533 | 32.6 | 4° | 0.06020 | 32312 |
| 114 | 20.068×34.7×4° | 20.068 | 34.7 | 4° | 0.07520 | 32313 |
| 115 | 21.499×37.73×4° | 21.499 | 37.73 | 4° | 0.09390 | 32314 |
| 116 | 23.046×41.4×3°40' | 23.046 | 41.4 | 3°40' | 0.11800 | 32315 |
| 117 | 24.571×43.81×4° | 24.571 | 43.81 | 4° | 0.14200 | 32316 |
| 118 | 25.863×45.239×4° | 25.863 | 45.239 | 4° | 0.16300 | 32317 |
| 119 | 27.294×48.65×4° | 27.294 | 48.65 | 4° | 0.19500 | 32318 |
| 120 | 28.795×49.168×4° | 28.795 | 49.168 | 4° | 0.22000 | 32319 |
| 121 | 30.924×54.77×4° | 30.924 | 54.77 | 4° | 0.28200 | 32320 |
| 122 | 34.449×60.193×4° | 34.449 | 60.193 | 4° | 0.38500 | 32322 |
| 123 | 37.067×64.939×4° | 37.067 | 64.939 | 4° | 0.48100 | 32324 |
| 124 | 44×81.42×3°30' | 44 | 81.42 | 3°30' | 0.70000 | 32330 |
| 125 | 49.2×90.59×4° | 49.2 | 90.59 | 4° | 1.18000 | 32334 |
| 126 | 12.95×21.3×2°30' | 12.95 | 21.3 | 2°30' | 0.02020 | 32018X2/YA/P5 |
| 127 | 12.95×20.4×2°30' | 12.95 | 20.4 | 2°30' | 0.01940 | 32020X2 |
| 128 | 15.55×24.4×2°30' | 15.55 | 24.4 | 2°30' | 0.03360 | 32024X2/YA |
| 129 | 18.15×29.1×2°30' | 18.15 | 29.1 | 2°30' | 0.05450 | 32028X2/YA |
| 130 | 20.75×33.7×2°30' | 20.75 | 33.7 | 2°30' | 0.08250 | 32032X3/YA |
| 131 | 25×42.066×2° | 25 | 42.066 | 2° | 0.15100 | 32038X4/YA |
| 132 | 31.1×53.36×2°30' | 31.1 | 53.36 | 2°30' | 0.29000 | 32044X2 |
| 133 | 15.56×32.57×2°10' | 15.56 | 32.57 | 2°10' | 0.04450 | 32938 |
| 134 | 23×44.46×2° | 23 | 44.46 | 2° | 0.13400 | 32956 |
| 135 | 5.108×10×3° | 5.108 | 10 | 3° | 0.00150 | L45449 |
| 136 | 5.605×11×3°7' | 5.605 | 11 | 3°7' | 0.00187 | LM12749 |
| 137 | 5.701×9.2×3°26' | 5.701 | 9.2 | 3°26' | 0.00169 | L4463 |
| 138 | 5.95×11.938×3°6' | 5.95 | 11.938 | 3°6' | 0.00160 | JL69349 |
| 139 | 6.523×10.7×3°40' | 6.523 | 10.7 | 3°40' | 0.00253 | LM11949 |
| 140 | 6.858×13.91×2°17' | 6.858 | 13.91 | 2°17' | 0.00369 | KN102949 |
| 141 | 7.503×12.5×3°30' | 7.503 | 12.5 | 3°30' | 0.00388 | LM48548 |
| 142 | 7.877×15.04×2°20' | 7.877 | 15.04 | 2°20' | 0.00530 | LM104949 |
| 143 | 8.291×13.62×3°35' | 8.291 | 13.62 | 3°35' | 0.00510 | LM501349 |
| 144 | 8.858×16.72×3°6' | 8.858 | 16.72 | 3°6' | 0.00722 | JLM506848E |
| 145 | 9.02×21.03×1°30' | 9.02 | 21.03 | 1°30' | 0.00980 | LM119348D |
| 146 | 10.415×22.41×4°57' | 10.415 | 22.41 | 4°57' | 0.01220 | HM803146 |
| 147 | 12.511×27.62×4°30' | 12.511 | 27.62 | 4°30' | 0.02210 | HM807048 |

| No. | Designations | Dimensions | | | Mass | Bearing No. for Reference |
|-----|-----------------------|------------|--------|----------|---------|---------------------------|
| | | D_w | L_w | R | | |
| | | mm | | | kg | |
| 148 | 14.5×26.51×2° | 14.5 | 26.51 | 2° | 0.01390 | LM239504 |
| 149 | 15.458×31.03×2°45' | 15.458 | 31.03 | 2°45' | 0.04110 | HM218248 |
| 150 | 15.875×28.649×3°30' | 15.875 | 28.649 | 3°30' | 0.03940 | HM212047 |
| 151 | 16.08×33.58×2°20' | 16.08 | 33.58 | 2°20' | 0.04870 | JM736149 |
| 152 | 17.648×29.95×3°36' | 17.648 | 29.95 | 3°36' | 0.05100 | HM518445 |
| 153 | 19.7×25.33×7°40' | 19.7 | 25.33 | 7°40' | 0.04990 | H913849 |
| 154 | 20.495×34.045×1°34' | 20.495 | 34.045 | 1°34' | 0.08360 | LM247704 |
| 155 | 20.9×34.04×1°30' | 20.9 | 34.04 | 1°30' | 0.08700 | L357004 |
| 156 | 22.564×41.26×1°46' | 22.564 | 41.26 | 1°46' | 0.12100 | LM451304 |
| 157 | 24.57×39.1×3°26' | 24.57 | 39.1 | 3°26' | 0.13100 | H221647NA |
| 158 | 25.4×28.06×1°54' | 25.4 | 28.06 | 1°54' | 0.10700 | LM249704 |
| 159 | 27.85×45.058×1°30' | 27.85 | 45.058 | 1°30' | 0.20500 | LM263149Dw |
| 160 | 28.762×50.13×3°29'40" | 28.762 | 50.13 | 3°29'40" | 0.22700 | HM224334 |
| 161 | 30.346×45.614×2°40' | 30.346 | 45.614 | 2°40' | 0.23900 | HM237504 |
| 162 | 33.35×45.905×2° | 33.35 | 45.905 | 2° | 0.29700 | L770849Dw |
| 163 | 11.3×23.1×4° | 11.3 | 23.1 | 4° | 0.01560 | 33209 |
| 164 | 11.53×24.08×3°10' | 11.53 | 24.08 | 3°10' | 0.01740 | 33113 |
| 165 | 14.32×31.76×2° | 14.32 | 31.76 | 2° | 0.03680 | 33021 |
| 166 | 14.35×34.06×1°56' | 14.35 | 34.06 | 1°56' | 0.03960 | 33022 |
| 167 | 15.124×30.76×3°50' | 15.124 | 30.76 | 3°50' | 0.03740 | 33213 |
| 168 | 15.547×32.98×2°16' | 15.547 | 32.98 | 2°16' | 0.04480 | 352936 |
| 169 | 17.75×29.69×2°16' | 17.75 | 29.69 | 2°16' | 0.05340 | 352122 |
| 170 | 19.74×43.16×3°40' | 19.74 | 43.16 | 3°40' | 0.08900 | 33219 |
| 171 | 25×43.48×2° | 25 | 43.48 | 2° | 0.15300 | 382952 |
| 172 | 29.1×53.13×3° | 29.1 | 53.13 | 3° | 0.25000 | 352136 |
| 173 | 30.55×31.135×2°50' | 30.55 | 31.135 | 2°50' | 0.16800 | 351044 |
| 174 | 31.2×30.1×3°30' | 31.2 | 30.1 | 3°30' | 0.17000 | 380641 |
| 175 | 31.96×53.605×2°20' | 31.96 | 53.605 | 2°20' | 0.31200 | 352138 |
| 176 | 32.006×41.175×2°30' | 32.006 | 41.175 | 2°30' | 0.24000 | 380652 |
| 177 | 37.4×63.166×3° | 37.4 | 63.166 | 3° | 0.49400 | 352144 |
| 178 | 5.5×8.23×2° | 5.5 | 8.23 | 2° | 0.00140 | 32908X2/P4 |
| 179 | 5.615×8.1×5°1' | 5.615 | 8.1 | 5°1' | 0.00140 | LR306/46.673 |
| 180 | 6.196×9.32×4° | 6.196 | 9.32 | 4° | 0.00196 | |
| 181 | 6.63×10.06×3°50' | 6.63 | 10.06 | 3°50' | 0.00240 | 3506/42X3TN1-2RS |
| 182 | 6.88×13.55×3° | 6.88 | 13.55 | 3° | 0.00350 | 3506/49-2LS |
| 183 | 6.944×9.06×4° | 6.944 | 9.06 | 4° | 0.00231 | 3506/34X3TN1-2RS |
| 184 | 7×15.55×3° | 7 | 15.55 | 3° | 0.00410 | 350610X3TN1-2RS |
| 185 | 7.33×14.3×3° | 7.33 | 14.3 | 3° | 0.00420 | 32010/YB2 |
| 186 | 7.38×14.03×1°50' | 7.38 | 14.03 | 1°50' | 0.00440 | 32916/P5 |
| 187 | 7.785×13.34×3°33'20" | 7.785 | 13.34 | 3°33'20" | 0.00443 | |
| 188 | 8.105×13.05×3° | 8.105 | 13.05 | 3° | 0.00480 | |
| 189 | 8.19×13.442×13°30' | 8.19 | 13.442 | 13°30' | 0.00363 | T135 |
| 190 | 8.209×16.78×3° | 8.209 | 16.78 | 3° | 0.00620 | M201047 |
| 191 | 8.323×10.1×6° | 8.323 | 10.1 | 6° | 0.00350 | LR306/40.62 |
| 192 | 8.585×11.85×6° | 8.585 | 11.85 | 6° | 0.00460 | 31305X2/YB2 |
| 193 | 8.636×15.12×4°20' | 8.636 | 15.12 | 4°20' | 0.00600 | |
| 194 | 8.697×14×4° | 8.697 | 14 | 4° | 0.00580 | |
| 195 | 8.996×17.85×3° | 8.996 | 17.85 | 3° | 0.00793 | |
| 196 | 9.066×16.77×3°30' | 9.066 | 16.77 | 3°30' | 0.00725 | 32209/YB2 |



LYC Tapered Rollers

| No. | Designations | Dimensions | | | Mass | Bearing No. for Reference |
|-----|----------------------|----------------|----------------|---------|---------|---------------------------|
| | | D _w | L _w | R | | |
| | | mm | | | kg | |
| 197 | 9.087×18.06×3° | 9.087 | 18.06 | 3° | 0.00818 | |
| 198 | 9.1×19.92×6° | 9.1 | 19.92 | 6° | 0.00790 | 32306AN |
| 199 | 9.232×18.06×3°30' | 9.232 | 18.06 | 3°30' | 0.00845 | |
| 200 | 9.3×9.301×14°50' | 9.3 | 9.301 | 14°50' | 0.00375 | LY-9004 |
| 201 | 9.367×15.8×5°30' | 9.367 | 15.8 | 5°30' | 0.00710 | 30306X2B/YB2 |
| 202 | 9.59×16.107×5°4' | 9.59 | 16.107 | 5°4' | 0.00800 | |
| 203 | 10×13.5×8° | 10 | 13.5 | 8° | 0.00650 | |
| 204 | 10.336×13.81×8°40' | 10.336 | 13.81 | 8°40' | 0.00725 | 31306/YB2 |
| 205 | 10.422×18.62×5°21' | 10.422 | 18.62 | 5°21' | 0.01040 | M802048 |
| 206 | 10.601×22.26×3°16' | 10.601 | 22.26 | 3°16' | 0.01350 | |
| 207 | 10.634×20.94×6° | 10.634 | 20.94 | 6° | 0.01170 | 323/32 |
| 208 | 10.737×14.27×3°7'30" | 10.737 | 14.27 | 3°7'30" | 0.00930 | 37431A |
| 209 | 10.77×22.273×3°5' | 10.77 | 22.273 | 3°5' | 0.01400 | |
| 210 | 11.35×20.65×6° | 11.35 | 20.65 | 6° | 0.01330 | 32307CN |
| 211 | 11.4×21.83×3°10' | 11.4 | 21.83 | 3°10' | 0.01550 | |
| 212 | 11.92×15.63×5° | 11.92 | 15.63 | 5° | 0.01200 | 30211X2 |
| 213 | 12.35×25.8×3°50' | 12.35 | 25.8 | 3°50' | 0.02080 | 33910/YB2 |
| 214 | 12.4×22.08×2°50' | 12.4 | 22.08 | 2°50' | 0.01900 | 30616/YB2 |
| 215 | 12.5×29.05×1°40' | 12.5 | 29.05 | 1°40' | 0.02590 | |
| 216 | 12.7×22.87×6° | 12.7 | 22.87 | 6° | 0.01850 | 32308CN |
| 217 | 13.2×29.56×2° | 13.2 | 29.56 | 2° | 0.02910 | 33019/YB2 |
| 218 | 13.3×22.97×2°30' | 13.3 | 22.97 | 2°30' | 0.02300 | 33114X2 |
| 219 | 13.752×25.5×3°10' | 13.752 | 25.5 | 3°10' | 0.02660 | 594A |
| 220 | 13.8×33.9×3°30' | 13.8 | 33.9 | 3°30' | 0.03400 | 306/47 |
| 221 | 13.9×33.1×3°20' | 13.9 | 33.1 | 3°20' | 0.03390 | DUF65168110 |
| 222 | 14.5×28.11×3°20' | 14.5 | 28.11 | 3°20' | 0.03220 | DUF55168100 |
| 223 | 15.15×20.365×8° | 15.15 | 20.365 | 8° | 0.02300 | 30309X2B |
| 224 | 15.47×30.27×2°10' | 15.47 | 30.27 | 2°10' | 0.04110 | 352026X2 |
| 225 | 15.64×30.18×1°50' | 15.64 | 30.18 | 1°50' | 0.04240 | 352936X2 |
| 226 | 15.76×33.11×3°14' | 15.76 | 33.11 | 3°14' | 0.04450 | 33118TN1 |
| 227 | 16×21.6×1°30' | 16 | 21.6 | 1°30' | 0.03270 | D1007856 |
| 228 | 16.6×35.745×1°50' | 16.6 | 35.745 | 1°50' | 0.05620 | 352940X2 |
| 229 | 16.93×33.23×3°26' | 16.93 | 33.23 | 3°26' | 0.05160 | LY-3026 |
| 230 | 17.081×31.76×3° | 17.081 | 31.76 | 3° | 0.05130 | |
| 231 | 17.58×29.08×2° | 17.58 | 29.08 | 2° | 0.05180 | 352936X2/YA4 |
| 232 | 17.8×36.15×3°50' | 17.8 | 36.15 | 3°50' | 0.06080 | |
| 233 | 18.278×34.13×3°10' | 18.278 | 34.13 | 3°10' | 0.06270 | NA759 |
| 234 | 18.49×38.05×2° | 18.49 | 38.05 | 2° | 0.07400 | 352940X2/YA1 |
| 235 | 19.093×36.09×2°4' | 19.093 | 36.09 | 2°4' | 0.07500 | 352944X2 |
| 236 | 19.43×32.045×1°31' | 19.43 | 32.045 | 1°31' | 0.07080 | 32948/YB2 |
| 237 | 19.447×28.08×1°46' | 19.447 | 28.08 | 1°46' | 0.06180 | 37941K |
| 238 | 19.6×42.13×3° | 19.6 | 42.13 | 3° | 0.08820 | 350620D1 |
| 239 | 20×35.054×2°10' | 20 | 35.054 | 2°10' | 0.08020 | 352948X2 |
| 240 | 20×35.1×2° | 20 | 35.1 | 2° | 0.07900 | |
| 241 | 20.8×26.56×8° | 20.8 | 26.56 | 8° | 0.05790 | 30313X2B |
| 242 | 21.6×44.12×3°46' | 21.6 | 44.12 | 3°46' | 0.11000 | 33220/YB2 |
| 243 | 22×32.11×2°20' | 22 | 32.11 | 2°20' | 0.08940 | M541349 |
| 244 | 22.8×38.76×3° | 22.8 | 38.76 | 3° | 0.11300 | |
| 245 | 23×21.775×7°52' | 23 | 21.775 | 7°52' | 0.06150 | LY-9003 |

| No. | Designations | Dimensions | | | Mass | Bearing No. for Reference |
|-----|-----------------------|----------------|----------------|----------|---------|---------------------------|
| | | D _w | L _w | R | | |
| | | mm | | | kg | |
| 246 | 23.24×27.535×1°3' | 23.24 | 27.535 | 1°3' | 0.09220 | LY-3019 |
| 247 | 24.3×28.456×3°30' | 24.3 | 28.456 | 3°30' | 0.09500 | 32006X2 |
| 248 | 24.755×31.339×8° | 24.755 | 31.339 | 8° | 0.09740 | |
| 249 | 24.805×38.106×3° | 24.805 | 38.106 | 3° | 0.13200 | LY-3023 |
| 250 | 24.914×45.11×3°10'30" | 24.914 | 45.11 | 3°10'30" | 0.15500 | |
| 251 | 25×43.48×2° | 25 | 43.48 | 2° | 0.15600 | 32952X2 |
| 252 | 25×43.17×1°30' | 25 | 43.17 | 1°30' | 0.15900 | 352956X2 |
| 253 | 25.361×50.06×1°50'4" | 25.361 | 50.06 | 1°50'4" | 0.18500 | M249749 |
| 254 | 25.381×50.057×1°50'4" | 25.381 | 50.057 | 1°50'4" | 0.18500 | 47T513627 |
| 255 | 25.505×46.078×2°16' | 25.505 | 46.078 | 2°16' | 0.17000 | 37248WF |
| 256 | 25.772×48.774×1°35' | 25.772 | 48.774 | 1°35' | 0.18800 | M257204 |
| 257 | 26×52.575×2° | 26 | 52.575 | 2° | 0.20200 | 352048X2 |
| 258 | 26.05×47.084×2°30' | 26.05 | 47.084 | 2°30' | 0.18000 | 352132X2 |
| 259 | 26.4×33.164×3°40' | 26.4 | 33.164 | 3°40' | 0.13000 | LY-3029 |
| 260 | 26.46×48.085×2° | 26.46 | 48.085 | 2° | 0.19300 | EE135111D |
| 261 | 27.1×51.07×1°50' | 27.1 | 51.07 | 1°50' | 0.21600 | M252304 |
| 262 | 27.54×38.277×2° | 27.54 | 38.277 | 2° | 0.17000 | 250KVE3601AEg |
| 263 | 27.58×42.116×2°40' | 27.58 | 42.116 | 2°40' | 0.18200 | 350641D |
| 264 | 28×50.568×1°30' | 28 | 50.568 | 1°30' | 0.23100 | 382968/HC C9 |
| 265 | 29.8×31.51×2°30' | 29.8 | 31.51 | 2°30' | 0.16300 | 382952X3 |
| 266 | 30×36.369×8°10' | 30 | 36.369 | 8°10' | 0.16600 | 45T202211-1F2 |
| 267 | 30.18×46.386×1°46' | 30.18 | 46.386 | 1°46' | 0.24600 | EE330116D |
| 268 | 30.679×47.7×2°24' | 30.679 | 47.7 | 2°24' | 0.25700 | 47T563927AwH |
| 269 | 31.1×53.358×2°30' | 31.1 | 53.358 | 2°30' | 0.29000 | 382044/HCYB2 |
| 270 | 32.026×41.129×2°30' | 32.026 | 41.129 | 2°30' | 0.24300 | 382052X2 |
| 271 | 33.6×59.55×2° | 33.6 | 59.55 | 2° | 0.37000 | 352052X2 |
| 272 | 35.719×60.173×3°10' | 35.719 | 60.173 | 3°10' | 0.42700 | EE420804 |
| 273 | 38.4×84.62×2°30' | 38.4 | 84.62 | 2°30' | 0.69200 | 46T504125GWH |
| 274 | 38.52×51.15×3° | 38.52 | 51.15 | 3° | 0.43200 | 240KBE031+L |
| 275 | 40.45×45.592×8°40' | 40.45 | 45.592 | 8°40' | 0.38300 | 31326DF |
| 276 | 42.668×55.467×7°30' | 42.668 | 55.467 | 7°30' | 0.51600 | LY-3018 |
| 277 | 43×80.23×3°20' | 43 | 80.23 | 3°20' | 0.60000 | 32244X2 |
| 278 | 45.72×62.23×3°2'30" | 45.72 | 62.23 | 3°2'30" | 0.73800 | 3-757 |
| 279 | 46×41.96×3°30' | 46 | 41.96 | 3°30' | 0.51500 | 31244 |
| 280 | 24.74×47.46×2°20' | 24.74 | 47.46 | 2°20' | 0.16300 | 352226X2-2RZ |
| 281 | 18.557×41.965×1°48' | 18.557 | 41.965 | 1°48' | 0.08200 | RT-641125 |
| 282 | 22.213×50.055×1°54' | 22.213 | 50.055 | 1°54' | 0.14000 | RT-641134 |
| 283 | 10.786×13.9×4° | 10.786 | 13.9 | 4° | 0.00900 | B3-709 |
| 284 | 14.261×16.1×4° | 14.261 | 16.1 | 4° | 0.01700 | B3-710 |