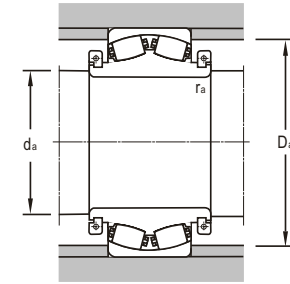
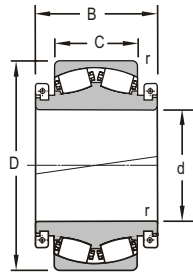




Spherical Roller Bearings
split bearing



d 300~1320mm

Boundary Dimensions					Basic Load Ratings	
<i>d</i>	<i>D</i>	<i>C</i>	<i>B</i>	<i>r_{min}</i>	Dynamic <i>C</i>	Static <i>C₀</i>
mm					kN	
300	500	160	240	5	2710	4940
480	870		310	7.5	7090	13300
530	780	185	288	6	3580	9110
560	820	195	300	6	4060	10600
630	920	212	330	7.5	5650	13100
710	1030	180	370	6	5070	12300
750	1090	310	310	7.5	7670	17000
	1090	250	310	7.5	7670	17000
800	1200	295	450	7.5	10100	22100
850	1220	365	660	7.5	10700	27800
	1220	365	540	7.5	9320	27800
	1220		365	7.5	10700	26000
900	1270	365	470	7.5	11100	33400
950	1360	300	420	7.5	10900	25500
1180	1540		500	9.5	12900	36000
1320	1850	666	10X45°		21900	57200
	1850	815	12		21900	57200

Bearing Designations		Calculation Factors				Mass
Present	Original	<i>e</i>	<i>Y₁</i>	<i>Y₂</i>	<i>Y₀</i>	
		mm				kg
23160D/W33X		0.32	2.1	3.1	2	150
23296D/W33		0.35		2.9	1.8	821
230/530D		0.23	2.9	4.4	2.8	415
230/560D/W33		0.23	2.9	4.4	2.8	478
230/630D/W33X		0.23	2.9	4.4	2.8	679
239/710X1D/C4W33X		0.17	4	5.9	3.9	718
26/750D/C4		0.22	3	4.5	2.9	920
230/750D/W33X		0.22	3	4.5	2.9	847
26/800D/W33X		0.23	2.9	4.4	2.8	1676
240/850D/W33		0.28	2.4	3.6	2.5	1944
240/850D-1/W33		0.28	2.4	3.6	2.5	1790
240/850D-5/W333X		0.28		3.6	2.5	1394
26/900D/C3W33X		0.27	2.5	3.7	2.5	1908
230/950D/W33X		0.2	3.4	5.1	3.3	1770
249/1180D/C3W33X		0.2		5	3.3	2246
240/1320D/C3W33X-1		0.26		3.8	2.5	5240
240/1320D/C3W33X		0.26	2.6	3.8	2.5	6021